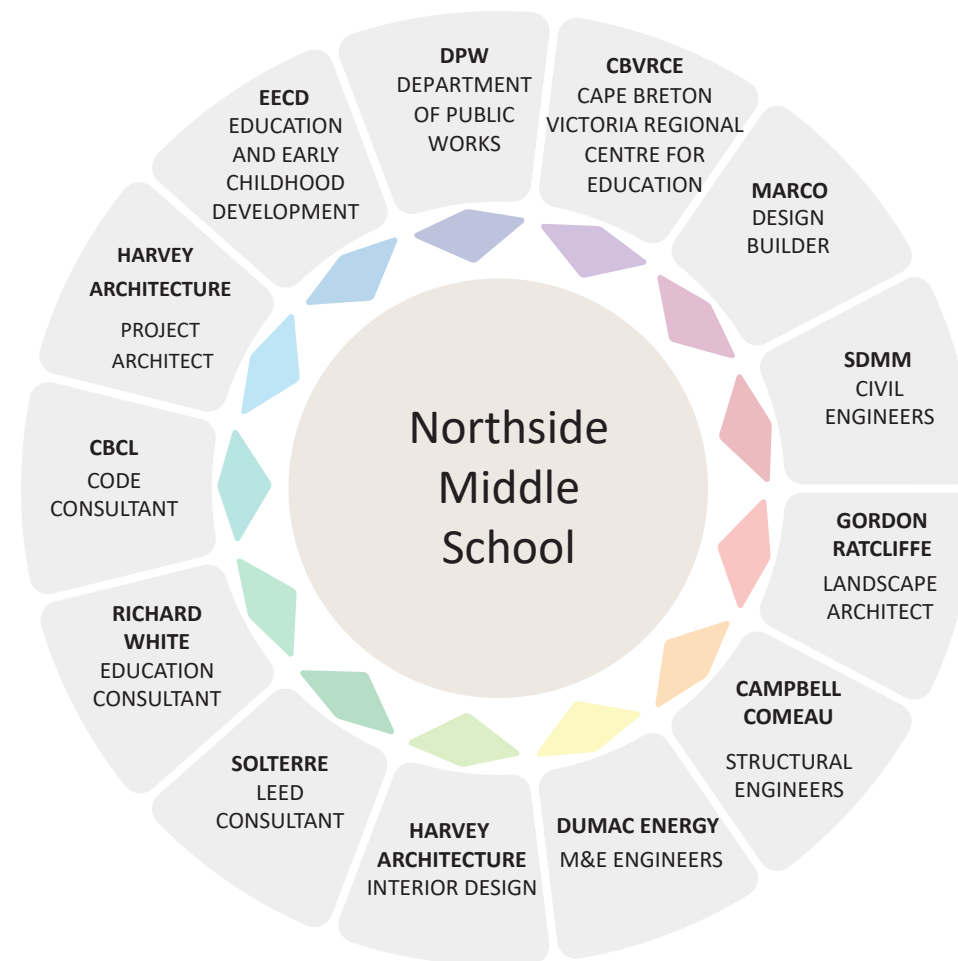


CONTENTS

1. SITE LAYOUT	01
2. INTERIOR LAYOUT	02
3. BUILDING MASSING	03



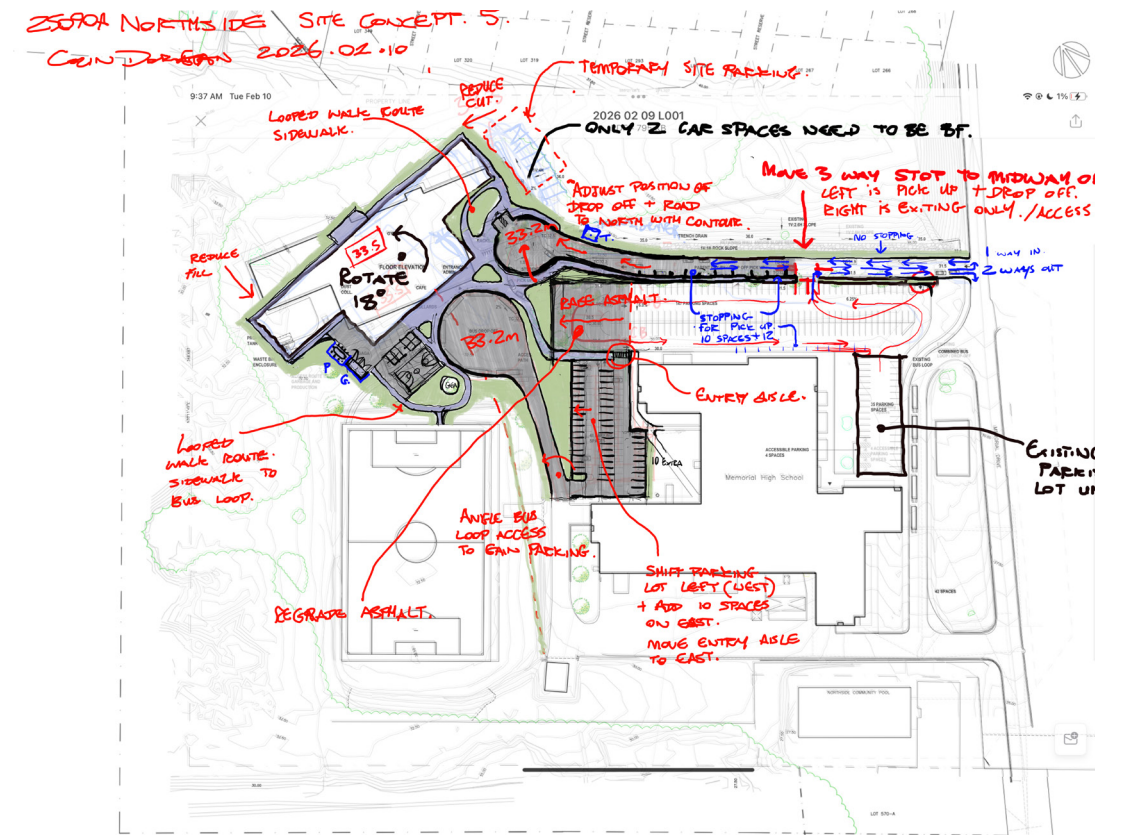
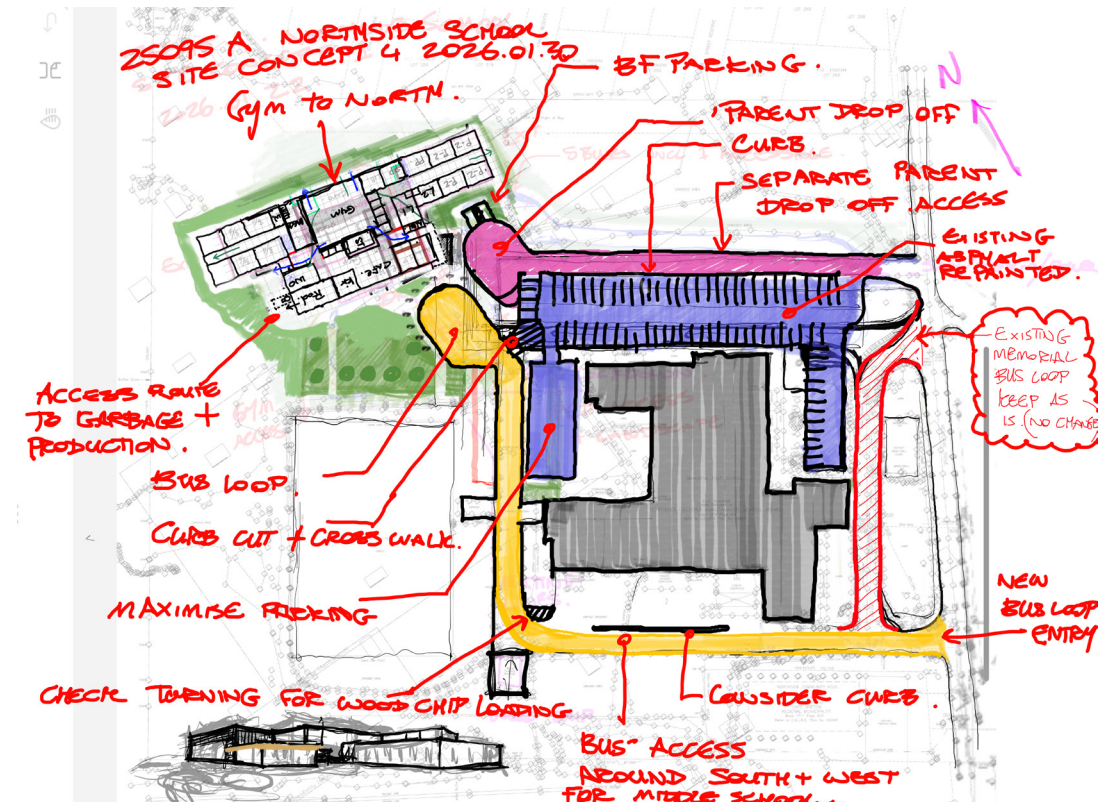
SITE LAYOUT

SITE CHALLENGES & OPPORTUNITIES:

- Significant grade changes on site, with new school at highest point behind existing school
- Project site at the rear of property
- Adjacency to existing high school and its inherited traffic, parking and circulation issues

DESIGN RESPONSE:

- Existing parking/paved surfaces utilized to minimize cost
- Parking/dropoff/pickup solutions service the new school integrated with existing school needs to improve circulation and better direction for designated uses
- Understanding of various dismissal times on site to adapt solution
- New bus loop and added parking works with existing grades to minimize cost



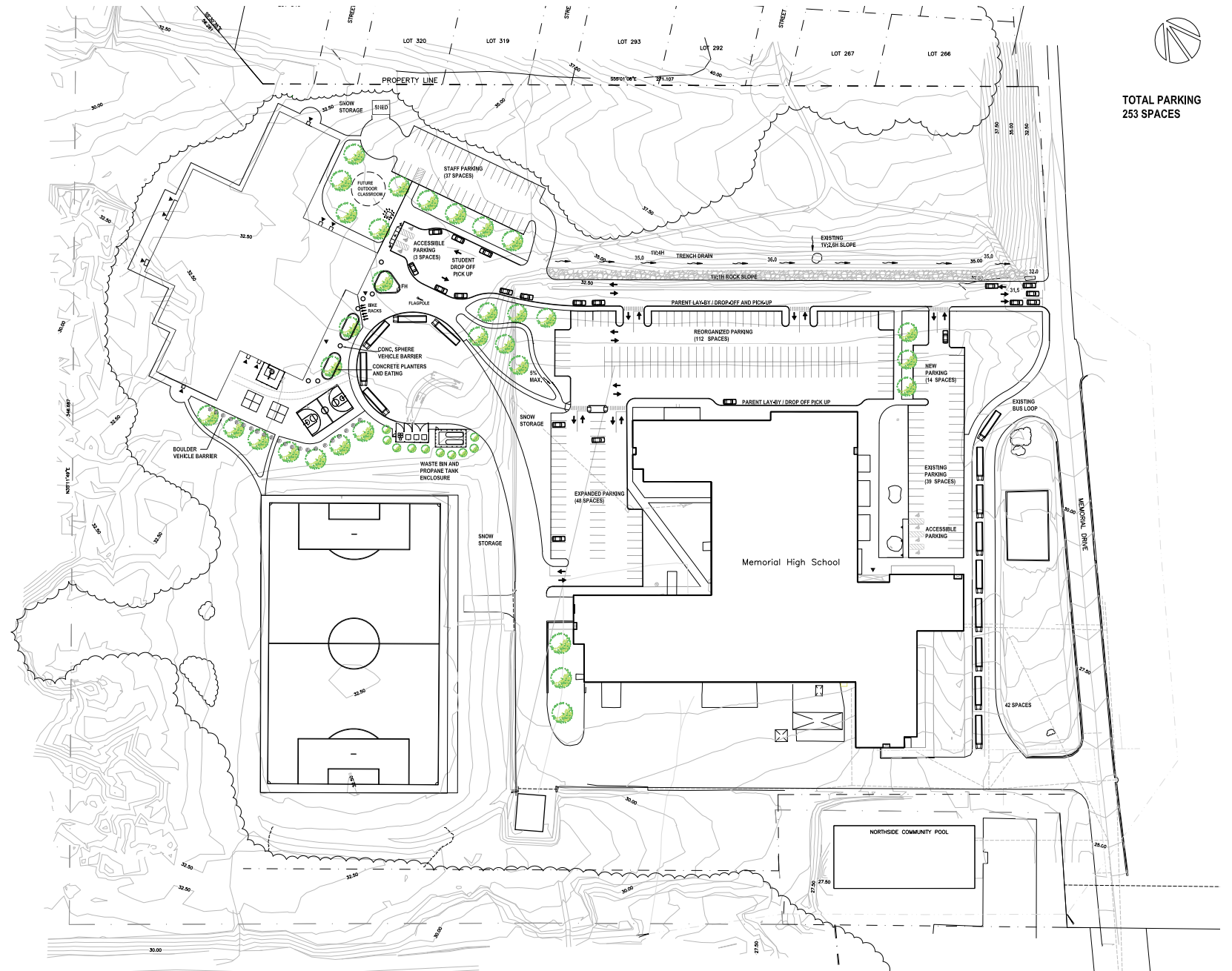
SITE LAYOUT

SITE & BUILDING ORIENTATION PRIORITIES:

- Provide safe separation between outdoor play / circulation and vehicular travel, parking and service.
- Orienting the building to maximize the use of natural daylighting
- fulfilling functional operations of visibility and ease of access

DESIGN ELEMENTS:

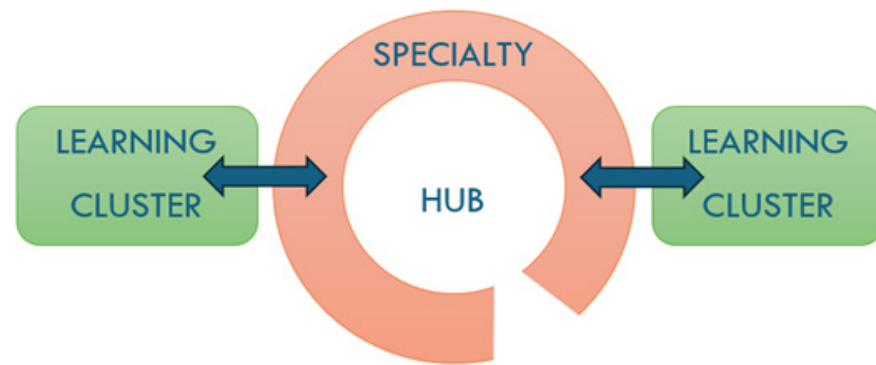
- Planters and precast elements employed to both enhance the surrounding site and ensure safety around perimeter of building
- Building orientation situated to utilize natural daylighting and position entrances to minimize travel distances from drop off locations and maximize visibility
- Position views and building access points to strengthen relationship between the core hub area and key outdoor spaces adjacent to the school



BUILDING DESIGN: LAYOUT

BUILDING LAYOUT GUIDING PRINCIPLES:

- Steam Approach: Collaborative learning, inclusivity, flexible teaching spaces
- Adherence to EECD standards/adaptability
- RFPs requirements including the separation Of Grade Areas
- Central Core to facilitate role as community hub, foster integration, provide access to shared spaces including after hours programming

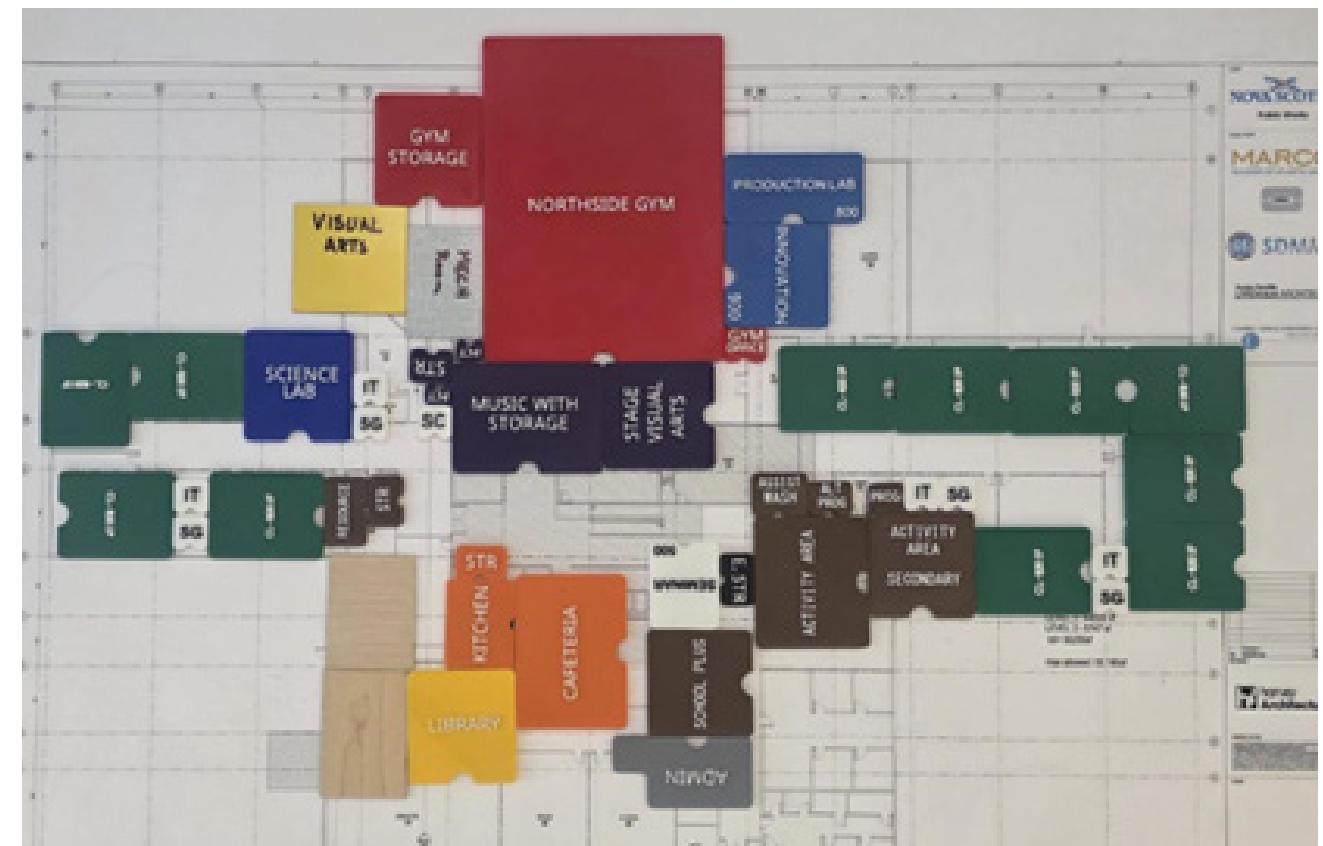
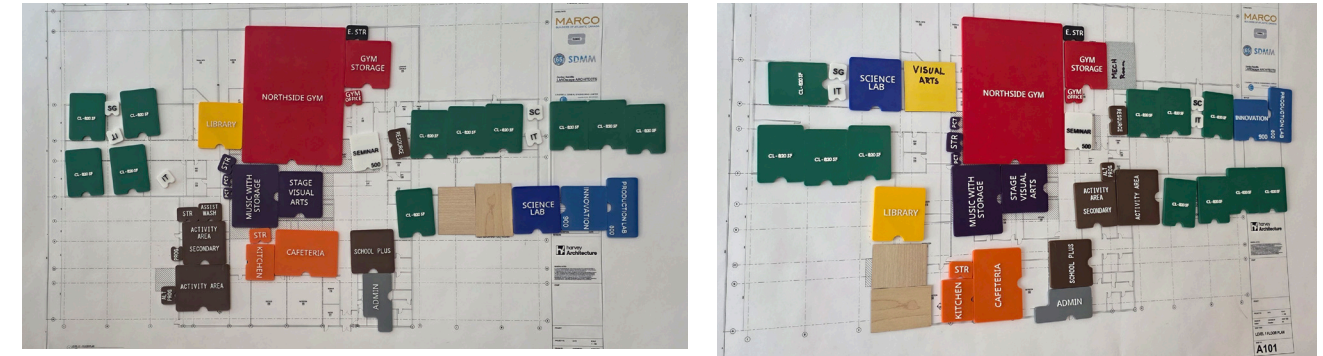


CONCEPT PARTI DIAGRAM

An opportunity allowed the specialty common spaces to seated and wrap around the social hub of the school

DESIGN APPROACH:

- Requirement to separate grade 3-6 from grade 7-9 defined the spatial parti-diagram. Classroom wings allow for division of Gr 6 from Gr 7 and 8 if required.
- The approach separated the learning environments into clusters with direct adjacency to the main social/entry hub of the school.
- Preliminary concepts were developed and subject to an open workshop for all project partners to share insights and perspectives regarding the spaces within the building and optimizing performance





BUILDING DESIGN: CONCEPTS

DESIGN INSPIRATION

- **North Sydney Ferry Terminal:**
Link to a globalized world that have vibrant colours passing by and becoming part of the landscape in large abstract forms every day.
- **The Atlantic ocean:**
Deep and chilling tones of navy and white with dancing wisps of snow and wind that inspire awe in the winter months
- **Mining Industry:**
Industrial past inspires various deposits of aggregates, colourful stones a unique relationship with light that could be incorporated.



COLOUR PALETTE

- **Classrooms & Dedicated Learning Zones:**
Relatively sombre in tone and colour selection such that focus can be retained on the learning exercise.
- **Hub Areas:**
Hub areas will be more vibrant and colours will be inspired by the rich flora and biodiversity of the site.
- **Theshold Spaces:**
Threshold spaces will be treated carefully and intentionally to allow students transition from vibrant areas to dedicated learning areas.

MATERIAL CONSIDERATIONS

Some early ideas of products/materials that could be employed in support of the design inspiration

(Images below for illustration purpose only and may not be reflective of final design)

TILE

VCT

1314 White/Grey
50 White W*

1408 Orange Crush
62 Tangerine Tango

1298 Clover
59 Heather Green

1238 Ocean Tide
92 Blue Lagoon

1278 Merlot
89 Burgundy

1370 Hudson Blue
18 Navy Blue

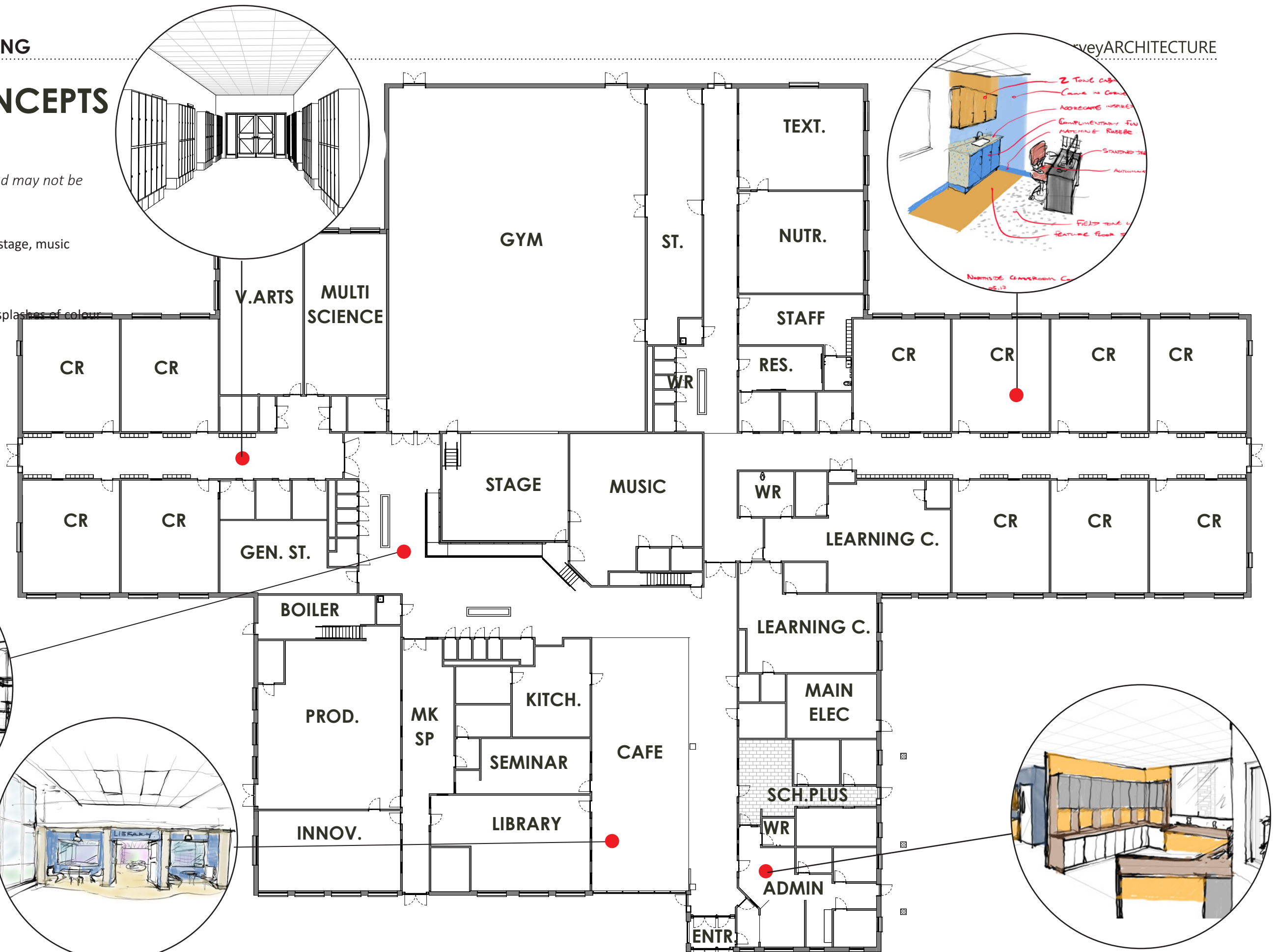
LAMINATE

DESIGN CONCEPTS

INTERIOR PERSPECTIVES

(For illustration purpose only and may not be reflective of final design)

- **Core/Hub area**
Ramp, washrooms, cafeteria, stage, music
Wayfinding
- **Typical Classroom:**
Teachers desk area, millwork splashes of colour
- **Administration**
Main reception desk



BUILDING DESIGN: CONCEPTS

DESIGN INSPIRATION

(Renderings for illustration purpose only and may not be reflective of final design)

Proposed Precast insulated sandwich panels:

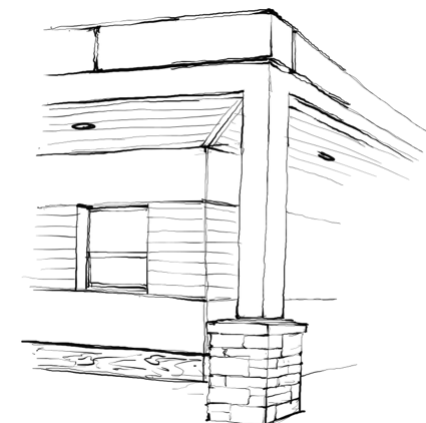
- broad range finishes with customization options
- opportunity for signature community features that may relate to the site or user groups involvement.
- Insulation values can be adjusted such that highly insulated walls that would be inline with energy modelling targets are achievable.

Non-combustible cladding:

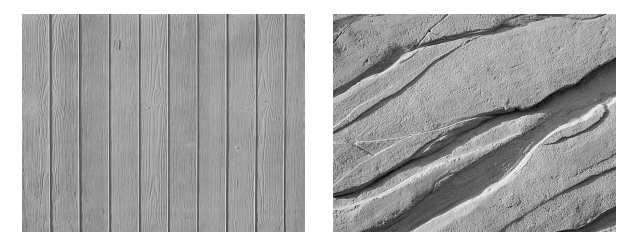
- options at this time are being explored that respond to current market trends
- Standard colour metals, through-colour fibre cement large format panels, wood fibre integrated phenolic panels, porcelain tile and extruded aluminum plank are being assessed for their performance and this will be expanded upon in the upcoming life cycle analysis.
- Small portions of the soffits and facias of canopies can be clad with fire retardant treated wood. This would offer some warmth to the entry way and potentially a direct response to the material inspiration offered by the site.
- Unit Masonry will be required at the lower portion of walls where cladding panels are used. The approach will be to simplify the design of masonry by providing checks in the foundation walls and avoiding coordination risks with shelf angles. At the entrance to the building the design team wishes to keep masonry to below window sills such that materials imbuing a



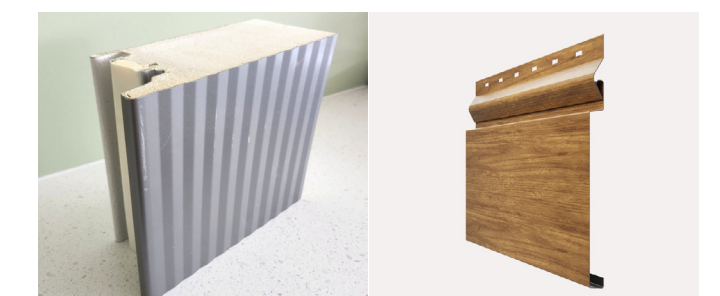
Category 1					Category 3				
Regal White SR.0.70 E.0.86 SR.85	Ascot White SR.0.69 E.0.85 SR.83	Bone White SR.0.69 E.0.84 SR.83	Driftwood SR.0.41 E.0.86 SR.50	Sandstone SR.0.61 E.0.85 SR.72	Surrey Beige SR.0.48 E.0.86 SR.54	Colonial Red* SR.0.33 E.0.87 SR.35	Evergreen SR.0.26 E.0.85 SR.24	Regal Blue SR.0.24 E.0.85 SR.24	Tahoe Blue SR.0.24 E.0.85 SR.24
Category 2									
Dove Gray SR.0.49 E.0.86 SR.56	Zinc Gray SR.0.35 E.0.86 SR.37	Rowhide SR.0.55 E.0.85 SR.44	Parchment SR.0.53 E.0.85 SR.41	Rock Tan SR.0.62 E.0.86 SR.74	Taupestone SR.0.27 E.0.86 SR.26	Spartan Bronze SR.0.31 E.0.85 SR.31	Redwood* SR.0.39 E.0.87 SR.43	Slate Blue SR.0.24 E.0.85 SR.27	



PRECAST CONCRETE



CLADDING



BUILDING MASSING

MAIN COMPONENTS:

1. **Core**
 - (a) Main Entrance, Seminar Room, Kitchen, Cafeteria, Stage, & Music Room
 - (b) Level 2 Mechanical Penthouse
2. **Gymnasium**
3. **Specialty Learning Cluster**
 - Library, Innovation, Production
4. **Learning Environments and Support Spaces**
 - (a) Classroom Wing, Visual Arts & Multi-Science
 - (b) Classroom Wing, Textiles, Nutrition, Staff & Support Spaces, Learning Centre, Schools Plus & Administration

(Renderings for illustration purpose only and may not be reflective of final design)

